


A Better Bangalore



BRIGADE  
ORCHARDS  
Devanahalli, Bangalore



A photograph of a champagne flute filled with bubbly champagne, sitting on a dark wooden tray. The background is a blurred airplane cabin interior with a window and a seat.

## What would you call a richer life?

Life isn't meant to be spent on a transatlantic flight.

Don't move so fast that you're too busy to enjoy the moments that matter. Teach your son cycling. Watch a sunset with your wife. Train for a marathon. Or just lie back and do nothing with the happy voices of your family around you.

At the end of the day, it's these little interludes that will enrich your life so much more

ZRICKS.COM

An aerial architectural rendering of a large-scale residential development. The scene is dominated by a central green space with a stadium or sports field. Surrounding this are several large, multi-story apartment buildings with balconies, arranged in a grid-like pattern. The development is interspersed with numerous trees and landscaped areas. In the background, there are more buildings and a road network. The overall color palette is muted, with greens, greys, and earthy tones.

ZRICKS

Move to an  
enriched life.

[www.Zricks.com](http://www.Zricks.com)



## Brigade Orchards expands your horizons. Your home is now 120 acres.

Brigade Orchards is a 120-acre haven ten minutes from the airport. A well laid out, multifaceted and inclusive township, it offers you a life very few select developments around the world can give you.

Brigade Orchards gives you the right mix of work and pleasure. Set within the complex are offices, homes, entertainment, a school and healthcare facilities. A sports arena, indoor games and workout facilities at the signature club, jogging tracks and winding trails give you enough options to stay fit. While retail spaces take care of your everyday needs.

Your kids grow up with the children who live around you – just like in the old days when neighbourhood kids were your best friends.

I want to give my child  
something important:  
a childhood.





Most schools don't have adequate sports facilities. We beg to differ.



stadium &  
sports arena



school

Many kids spend half their young lives stuck in a commute. At Brigade Orchards, however, the school is only a short walk away.

A sports arena, spread over 8 acres, has sports like tennis, football, volleyball and basketball. It boasts practise nets and pitches. And has a 400 meter track.

There's also seating for 2000 people. Just so you can watch as your son wins his first track and field medal

## Growing up here comes with strings attached: Sports, entertainment and culture



At Brigade Orchards there's more than text books for your kids to enjoy.

The arts village, inspired by the likes of arts villages in San Fransisco and Chennai's Cholamandalam, promises to become a destination by itself. It will incorporate studios for senior artists and sculptors, a graphic studio, cafes, a library, open air theaters and large exhibition spaces.

Discover rewarding sports and entertainment at The Signature Club. Superlative fitness facilities include a gym, squash, billiards and tennis. Push your limits horse riding, in the heated indoor swimming pool or on the rapelling walls.

The Club also has party and barbeque areas, tempting F&B options, and state-of-the-art conferencing facilities. And the antidote to such hectic leisure: a spa with a jacuzzi and salon to pamper yourself!

To me, an enriching life is  
quality time to myself.

Out here, trees sigh in the breeze. And tropical  
vegetation, inspired from places like Bali, landscape  
main roads to effectively screen off sound.



green zones



cul de sacs



lush tropical  
landscape

Privacy and greenery are accentuated here. Each  
cul-de-sac holds a maximum of only six homes,  
designed to have similarities but not look exactly alike.

Your kids can cycle on the roads, like in the Bangalore  
of your childhood. It's like living in an exclusive  
Western community – until you leave the 120 acres of  
rarefied space.



ZRICKS  
PROJECT

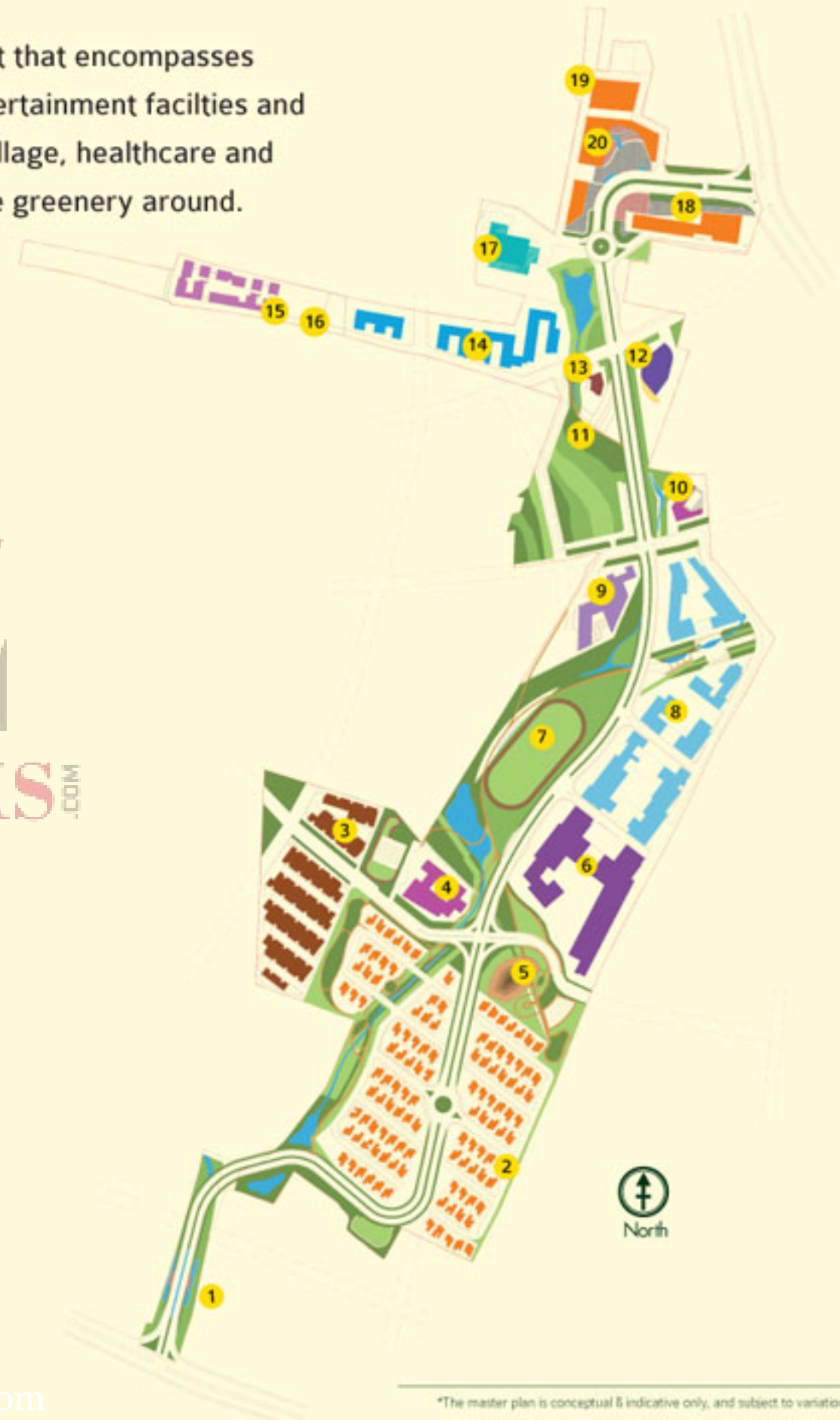


# Master Plan\*

Brigade Orchards is an inclusive development that encompasses homes, workplaces, the finest sports and entertainment facilities and carefully thought out amenities like an arts village, healthcare and schools. All of which are designed with ample greenery around.

## Legend

1. Main Entrance (South)
2. Pavilion Villas
3. Town Houses
4. Signature Club
5. Rock Park
6. Parkview Apartments
7. Stadium / Sports Zone
8. Apartments
9. School
10. Neighborhood Club
11. Green Park
12. Health Center
13. Police & Fire Station
14. Apartments
15. Open Parking
16. CA Space
17. Art Village
18. Offices
19. Town Square
20. Retail & Multiplex



# The Pavilion Villas\*

The Pavilion Villas are designed to respect the environment. Created around beautiful trees, these are homes that you will be proud to own.

## Legend

- 1. South Entrance
- 2. Nature Trail Park
- 3. Tamarind Square
- 4. Park
- 5. Signature Club
- 6. Rock Park
- C Villas with Sloped Roofs
- C Villas with Flat Roofs
- T Villas with Flat Roofs





Other villas are designed around plans.  
Ours are around trees.

The Pavilion Villas at Brigade Orchards have been created to respect the earth and the environment.

Designed around trees that are part of the original orchard, with gardens that they open out to, they flow smoothly into airy spaces that draw in light.

Regulated traffic and security screen you off from the rest of the crowds. It's like living in the Bangalore of old – except for the ultra-modern luxuries that every villa has.



## The C Villa With Sloped Roof

The C Villa wraps around the central tree, with a courtyard in between its two arms. Sloping roofs add old world charm.

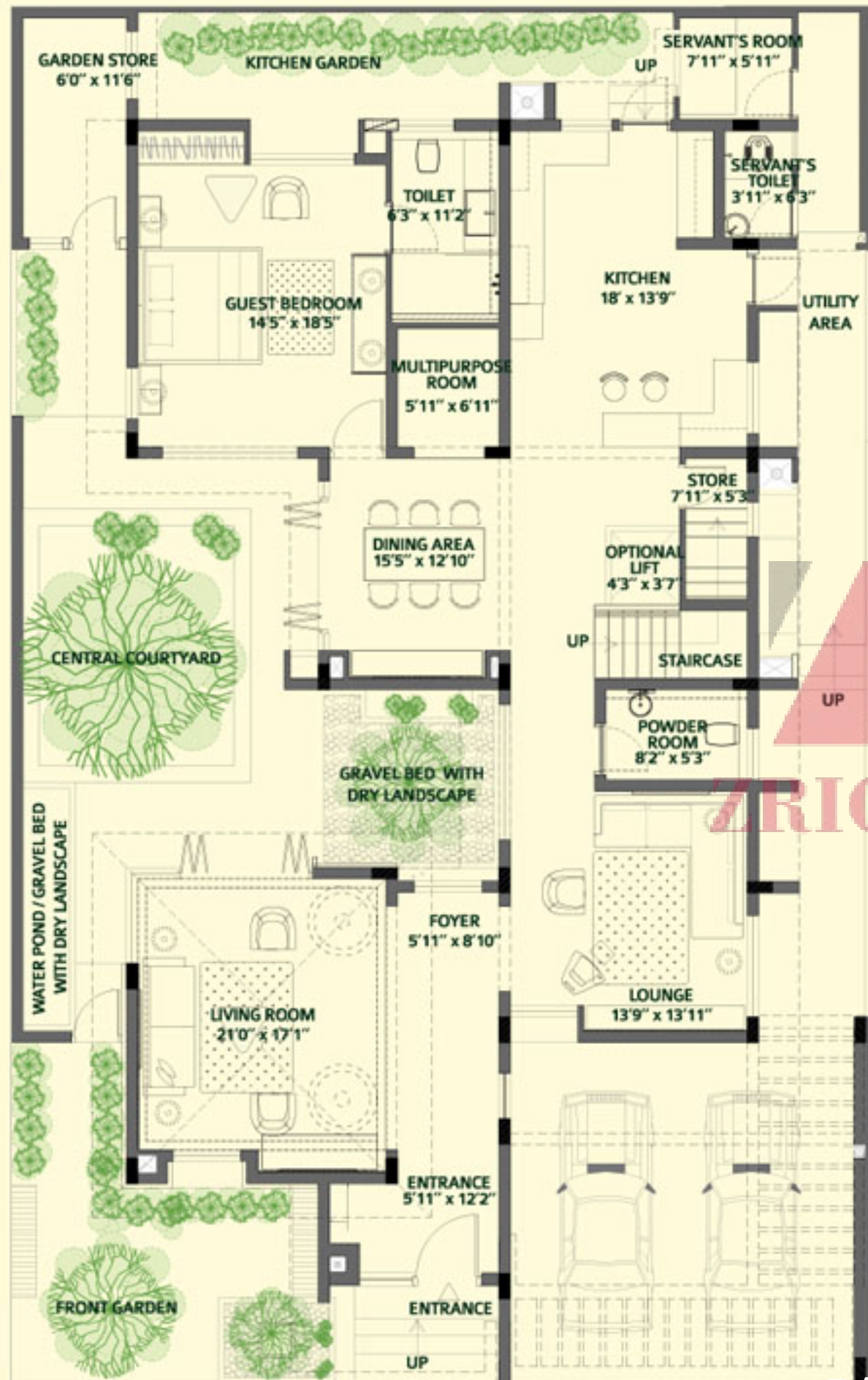
Villa Area: 4915 sq. ft.



ZRICKS.COM

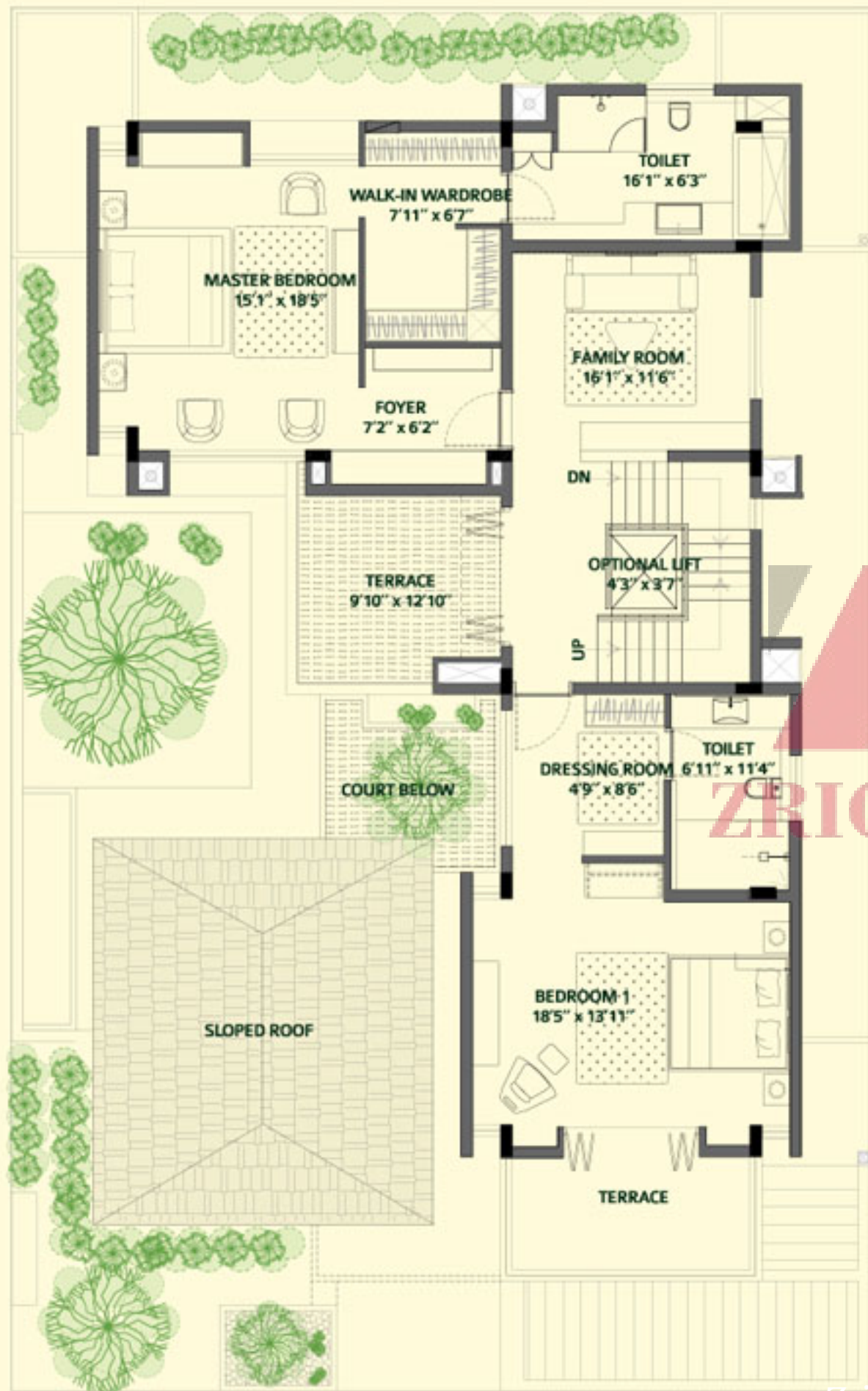


# C Villa with Sloped Roof Ground Floor Plan



ZRICKS.COM

# C Villa with Sloped Roof First Floor Plan



ZRICKS.COM

# C Villa with Sloped Roof Second Floor Plan



ZRICKS.COM



## The C Villa With Flat Roof

The C Villa wraps around the central tree, with a courtyard in between its two arms. Flat roofs add a contemporary character.

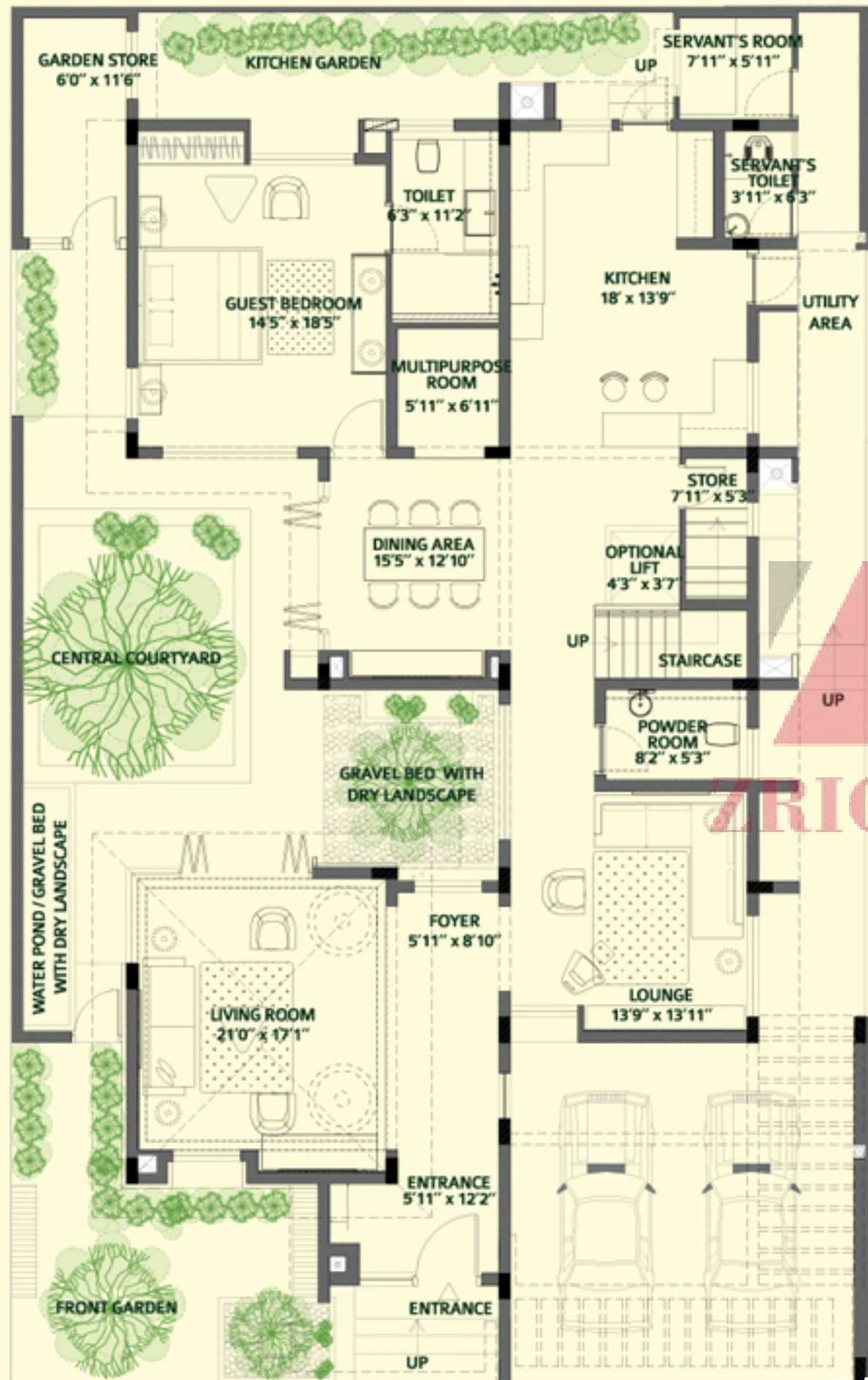
Villa Area: 4940 sq. ft.



ZRICKS.COM



# C Villa with Flat Roof Ground Floor Plan



ZRICKS.COM

# C Villa with Flat Roof First Floor Plan



ZRICKS.COM

# C Villa with Flat Roof Second Floor Plan



ZRICKS.COM



## The T Villa With Flat Roof

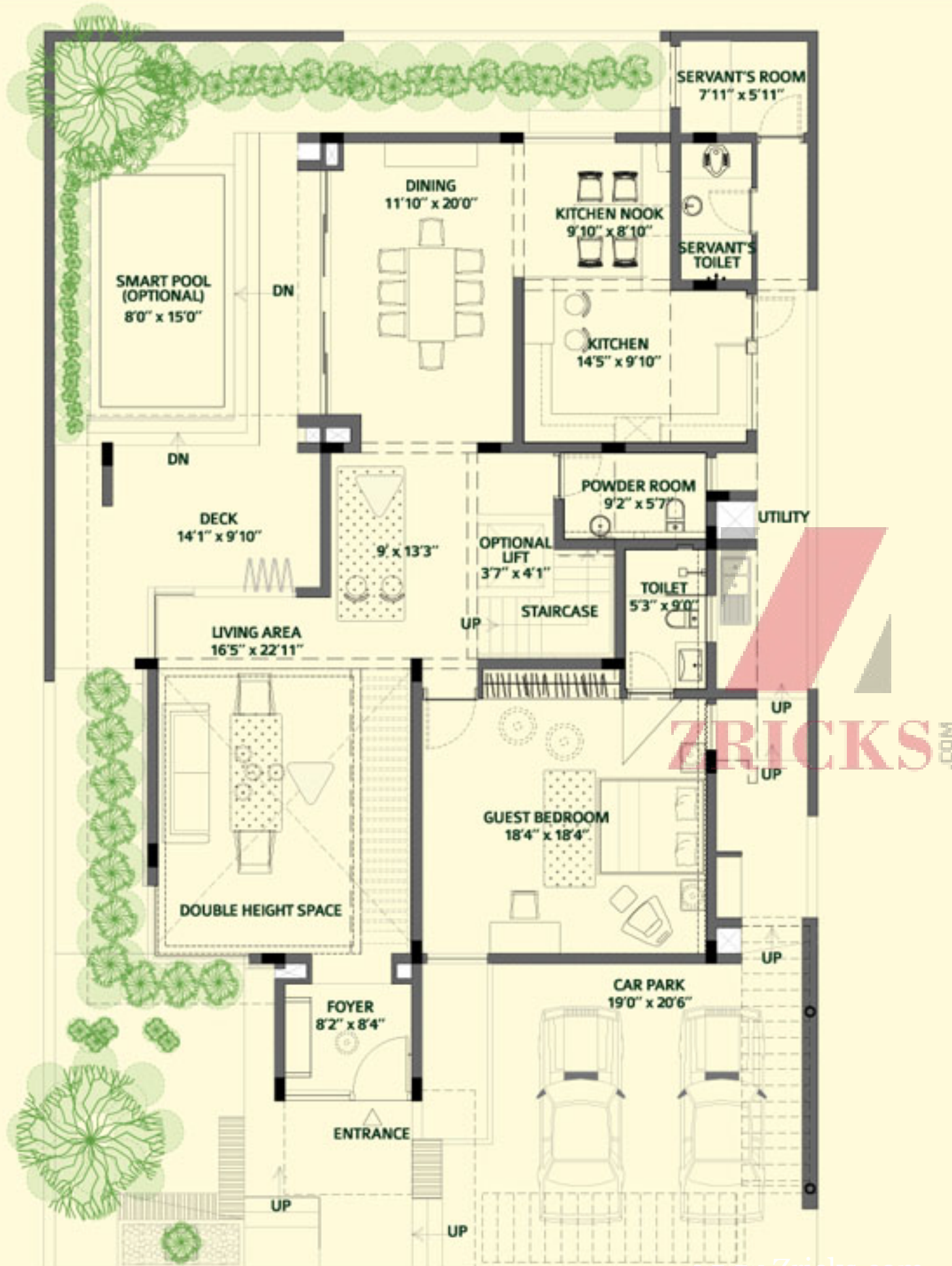
The T villa is designed under the shade of the tree. Its linear design adds to its sleek, modern feel.

Villa Area: 4925 sq. ft.

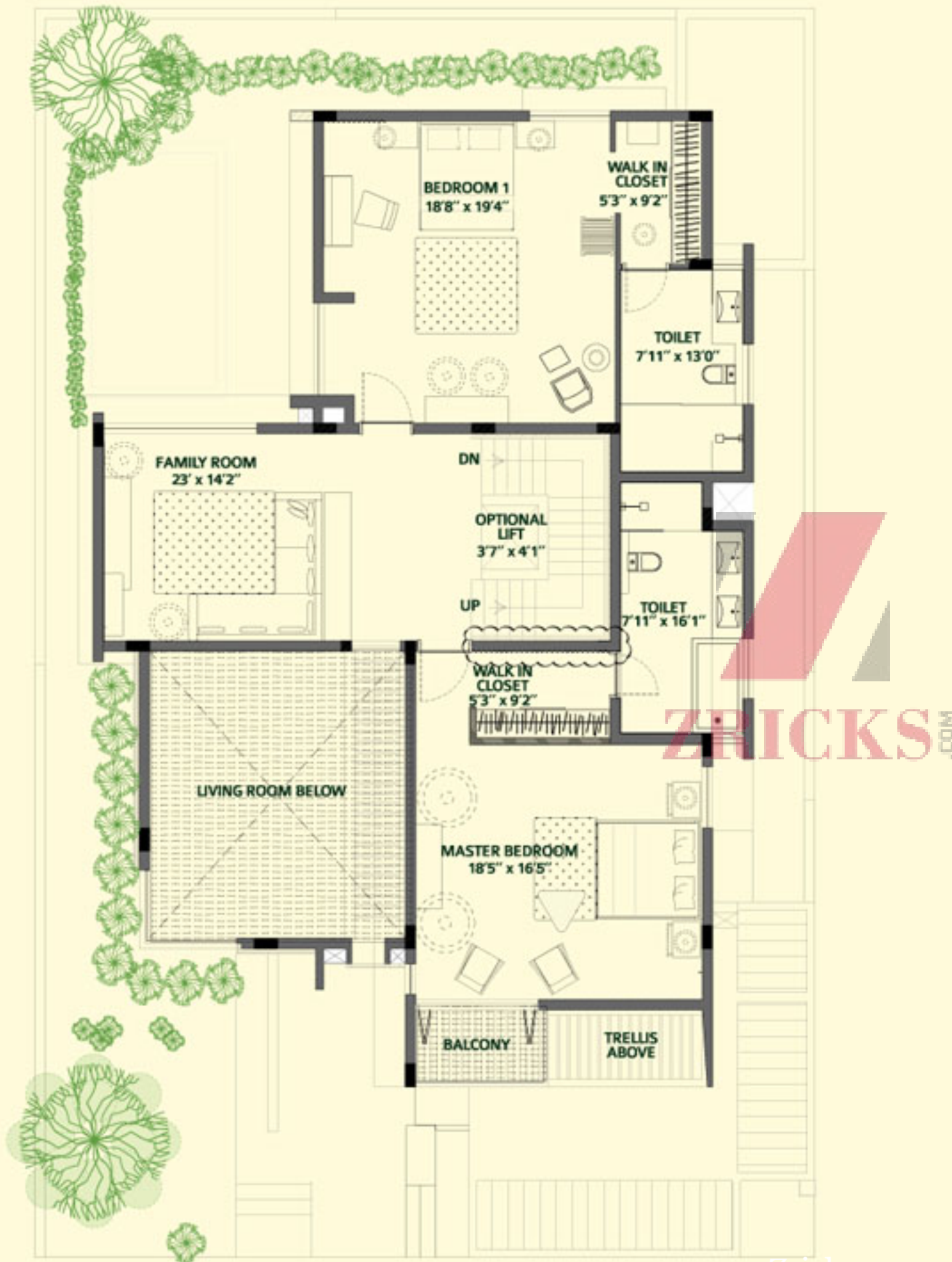


ZRICKS.COM

# T Villa with Flat Roof Ground Floor Plan

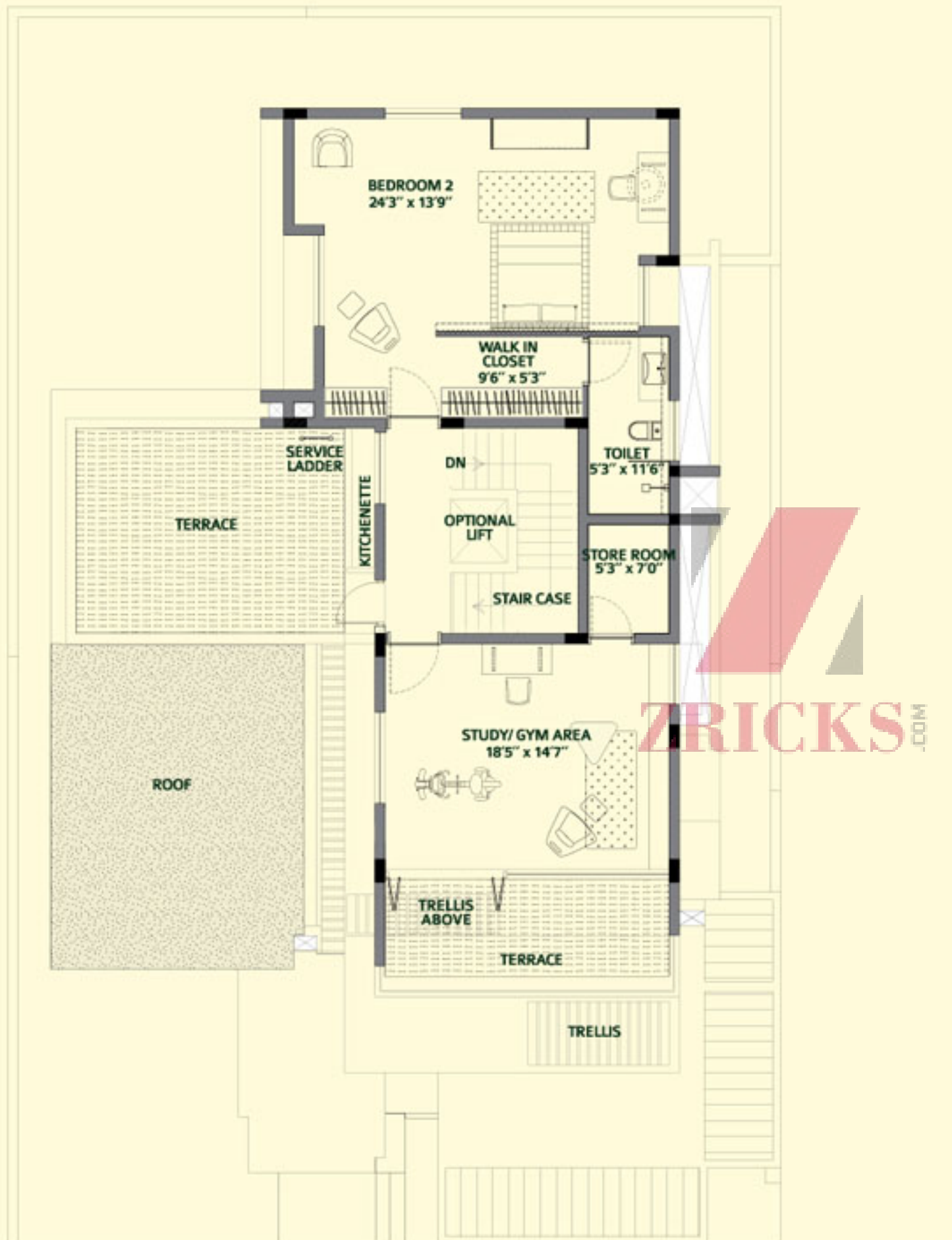


# T Villa with Flat Roof First Floor Plan



ZRICKS.COM

# T Villa with Flat Roof Second Floor Plan



We designed your home.  
And then we spent endless nights  
choosing what goes into it.



#### 1. SUPER STRUCTURE

RCC framed structure with solid cement block masonry

#### 2. PAINTING

External Textured Paint: Paint/Cladding

Internal Wall & Ceiling: Plastic Emulsion Paint

#### 3. FLOORING

Foyer/ Living/ Dining/ Bar/ Family/ Other internal  
common areas - Imported vitrified tiles/ marble flooring

Kitchen - Superior quality vitrified tiles

Master Bedroom - Laminated wood

Other Bedrooms - Superior quality vitrified tiles /  
Laminated wood

Servant's Room - Ceramic Tiles

Balconies - Superior quality vitrified tiles

All Toilets - Granite/ Anti-skid Vitrified tiles

Gymnasium/Home Theatre - Heavy Duty  
Vinyl/Laminated wooden flooring

Verandahs/Decks - Superior quality anti-skid  
vitrified tiles

#### 4. INDOOR WALLS

Kitchen - 2'0" above counter vitrified tiles

Toilets - upto ceiling bottom vitrified tiles

Servant's Toilet- upto 7'0" ht ceramic tiles

#### 5. TOILET FIXTURES

Master Toilet - 4 Fixture Toilet

Wash Basins, 1 Shower Cubicle, 1 EWC, 1 Bath Tub,  
Granite/ marble counter & ledges Kohler/American  
Standard or equivalent.

Other Toilets - 3 Fixture Toilet

1 Wash Basin, 1 Shower cubicle, 1 EWC, Granite/  
Marble counter & ledges

Kohler/ American Standard or equivalent

[www.Zricks.com](http://www.Zricks.com)

#### 6. DOORS

Entrance Door - Polished Teak wood  
frame & shutter

Internal Door - Hard wood frames & flush shutter

External Deck/ Balcony Doors - UPVC/Aluminum  
frames with partially glazed shutters

#### 7. SERVICES & FITTINGS

Power Supply - 10 KW

#### STANDARD SERVICES

- Door Video Phone
- LPG Copper connection
- Solar Water Heater -200 L
- 50% DG Back up
- Split A/C provisions
- Copper piping for internal water supply
- Rain-water harvesting

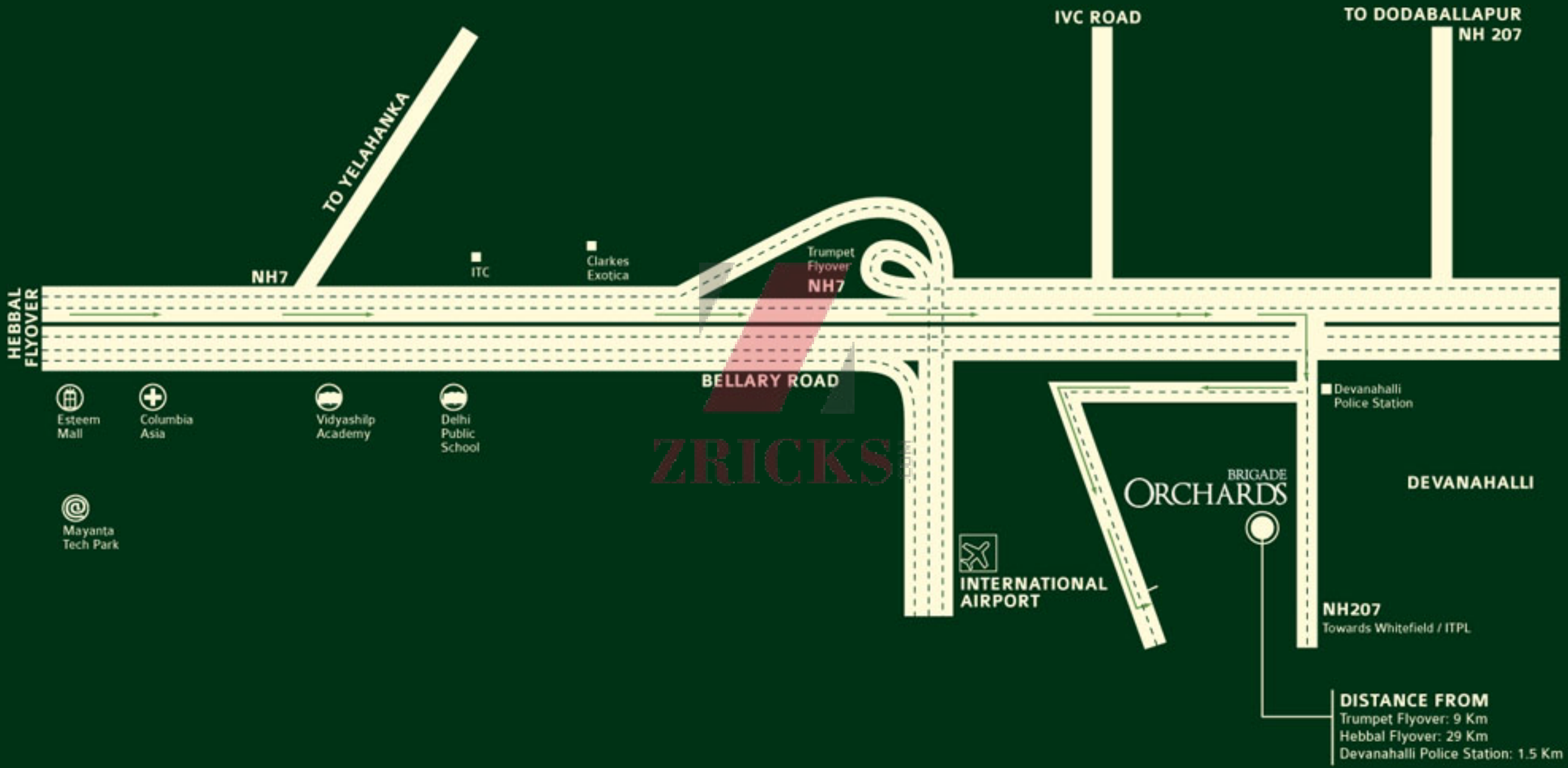
#### SERVICES AVAILABLE AT ADDITIONAL COSTS

- 100% Power Back-up
- Additional power (up to 5 KW extra)
- Landscaped Terrace gardens as per standard designs
- Home automation system
- Replication of interiors/ upgrades in finishes as done in the Mock-up unit
- Gymnasium Equipment
- Water Bodies
- Ductable VRV system to cover entire Unit
- Elevator
- Smart Pool
- Home theatre

The specifications are subject to variations, modifications and substitutions as may be recommended by the company's Architect. E80E



# How to get there



# The Brigade Group

The Brigade Group commenced operations in 1986. Over 25 years, Brigade has evolved into a brand that is synonymous with innovation, quality & trust.

Headquartered in Bangalore, Brigade Group has a network of offices across South India, and a representative office in Dubai. Brigade Group's portfolio includes residential, commercial, retail & hospitality projects.

With over 20 million square feet of developed real estate, Brigade has emerged as one of India's leading property development brands. To meet the growing demand for quality real estate, Brigade is leveraging 25 years of expertise, to set new benchmarks in the industry.

An award-winning brand, Brigade Group has developed premium residences, luxury apartments, office buildings, software parks, malls, clubs, spas, hotels, serviced residences and SEZs.

## Awards & Accolades

The Brigade Groups has received accolades at many prestigious forums. These include:

- Brigade Group featured in the prestigious "200 Best Under a Billion Dollar" Forbes List of 2008 for the Asia Pacific Region. Brigade was the only real estate company from India (and the only Bangalore company from any field) to find a place in the Forbes List of 2008.
- Brigade Group has been recognized as one of "India's Top 10 Builders" for 5 consecutive years - 2007 to 2011 by Construction World.
- Brigade Group won the "Regional Developer of the South" Award in 2009 and 2010 from Realty Plus.
- Brigade Group won the "Best Developer in Residential Infrastructure" from Construction Source India for 2009.
- Brigade Group's Mercure Homestead Residences - a 5 star serviced residence, received the "Best New Hotel of The Year 2010 in South Asia" in the serviced apartments segment from HVS, IN.
- The Brigade School at Mahadevpura, constructed by JMC, won the "ICI-KBC Birla Super Endowment Award for Outstanding Concrete Structure of Karnataka -2010".
- Brigade Group won the "Best Commercial Developer Of the Year" Award at the Realty Plus Excellence Awards South-2011

- The World Trade Center at Brigade Gateway received the "Best Commercial Project in India for 2010" from Property World.
- Brigade Metropolis recently won the CNBC Awaaz CRISIL CREDAI Real Estate Award 2010 for "Best Residential Property in South India".
- Galaxy Club at Brigade Gateway won the CNBC Awaaz CRISIL CREDAI Real Estate Award 2010 for "Best Hospitality Architecture".





*For a better quality of life,  
upgrade to Brigade*

---

**Brigade Enterprises Limited**, Hulkul Brigade Centre, 82, Lavelle Road, Bangalore 560 001 Karnataka, INDIA  
**Toll Free No:** 1800 102 9977 | **E-mail:** salesenquiry@brigadegroup.com | BrigadeGroup.com

The information herein, i.e. specifications, designs, dimensions, illustrations etc. are subject to change without notification, as may be required by the relevant authorities or the Developer's Architect and cannot form part of an offer or contract. Whilst every care is being taken in providing this information, the owners, developers and managers cannot be held liable for variations. All illustrations are artist's impressions only, and do not form part of the standard offering. The plans & specifications are subject to variations, modifications and substitutions as may be recommended by the company's Architect and / or relevant approving authorities. E&OE



*Building Communities & Values*

BCV Developers Pvt. Ltd.  
(A Joint Venture of Brigade Enterprises Ltd.  
with Classic Valmark)

[www.Zricks.com](http://www.Zricks.com)